

# HOUSING & RESIDENCE LIFE

LIVING THE EXPERIENCE



EAST TENNESSEE STATE  
UNIVERSITY





# YOUR BEGINNING MATTERS TO US!

Students living on campus are the heart of the ETSU community. A great college foundation is realized through the support, environment and resources that are available on campus. When you live on campus, you will meet friends, get involved, and learn what ETSU has to offer you, all of which is available just outside your door. Enjoy life as a Buccaneer by living on campus and experience the many benefits, such as:

- Living-Learning Communities that provide intentional programming designed to facilitate your success as a student.
- Immediate access to ETSU amenities, programs, services, and events.
- Friends that last a lifetime.
- Full-time professional, graduate, and undergraduate live-in staff.
- Numerous leadership, service, and job opportunities.
- Intentional programming that promotes academics and community awareness.
- Partnerships with academic departments and advisors to support students' success.
- Living environments that are attractive, safe, affordable and convenient.
- Variety of living environments with varying amenities and different price points.



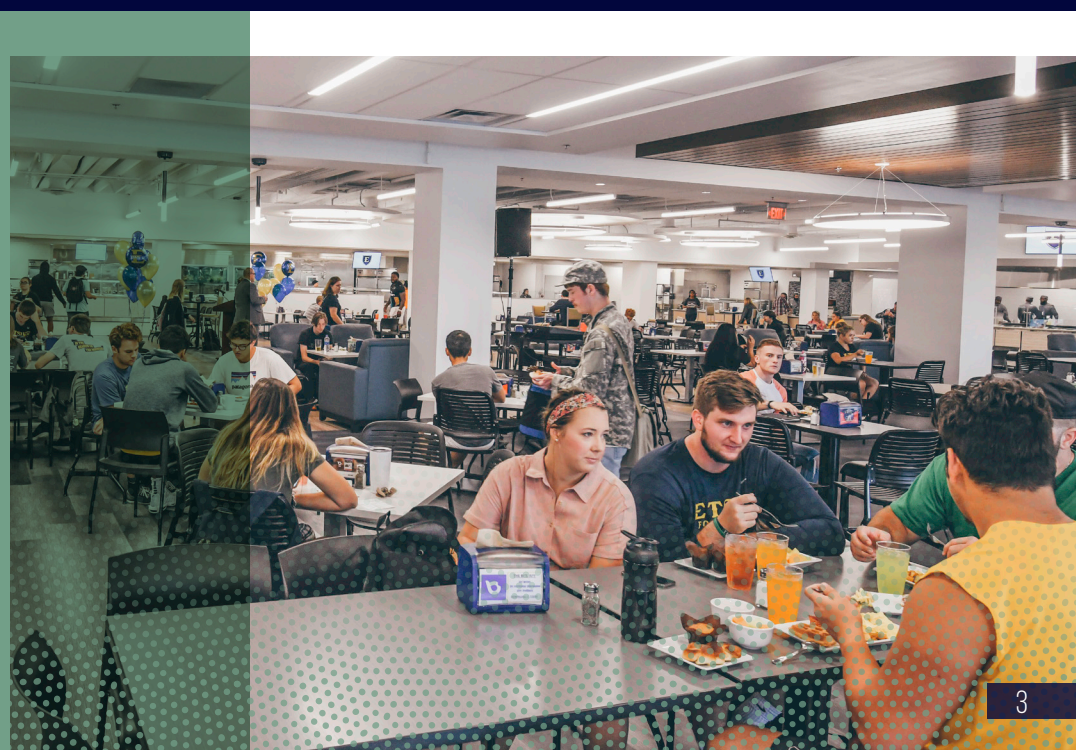


# YOUR DINING EXPERIENCE MATTERS TO US!

The ability to dine together seven days a week can directly impact students' residential and collegiate experiences. This is especially true for the 'freshman experience', which is that bonding time when first-year students are eating together in campus residence halls and dining venues where friendships are built, as well as tighter bonds with the university.

In addition, research has shown that retention and graduation rates (not to mention strong alumni programs) are often directly affected by this type of meaningful program. All students who live on campus, except those living in the Buccaneer Ridge Apartments, will automatically be enrolled in the Anytime 7-Day Silver Plan, but may upgrade to the Gold or Platinum plan.

All other residential and commuter students may choose from any of the Anytime 7-Day Plans or Anytime 5-Day Plan. For more information on dining plans, please go to the housing website at [etsu.edu/housing](https://etsu.edu/housing).





# YOUR SAFETY MATTERS TO US!

The university and Housing and Residence Life have a mission to provide students with a safe learning environment through education, community standards, and personal responsibility. Each member of the community has a responsibility to make the campus as safe as possible by looking out for each other and utilizing resources offered, such as:

- Professional housing staff available 24/7.
- Public Safety available 24/7.
- ETSU App - emergency notification system.
- Campus safety and crime prevention programs presented in the halls each semester.
- Safe Voyage: ride the campus shuttle, Bucshot, or call ETSU Public Safety at (423) 439-4480 for a walking escort.
- Card access to halls/room via your ID card.
- Strategically placed cameras.
- Security personnel monitoring doors and parking lots in and around all housing facilities nights/weekends.
- For emergencies or to report suspicious persons/behaviors call (423) 439-4480.







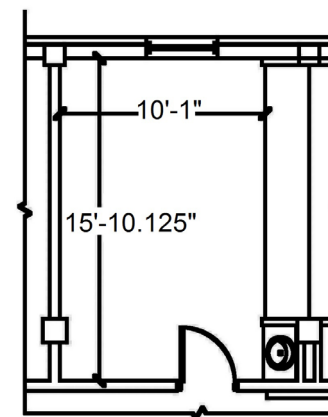
## IT MATTERS WHERE YOU LIVE!

Students have their own unique needs when it comes to where they live, so we are proud to offer a large variety of living environments with varying amenities at different price points. From the traditional residence halls to two-bedroom apartments, we have a living option to fit almost any need with the convenience of having all utilities included. Our all-inclusive rent is billed once per semester to your student account, and in most cases can be paid with financial aid. Housing agreements are a two-semester commitment, with spring- and/or summer-only agreements available.



## RESIDENCE HALLS AND EFFICIENCIES

Hall	Type	Capacity	Sex	Bath	Kitchen	Elevator	Community Space	Map Code, Page 15
Lucille Clement	Traditional	465	Co-Ed, by Wing	Community	Community	Yes	Yes	F
Davis	Efficiency Apartments	252	Co-Ed, by Room	Private	Private	No	No	D
Governors	Hotel Style	530	Co-Ed, by Room	Private	-	Yes	Yes	E
Powell	Traditional Style	85	Co-Ed, by Wing	Community	Community	No	Yes	H
Luntsford	Efficiency Apartments	183	Female	Private	Private	Yes	Yes	G
West	Traditional	85	Female	Community	Community	No	Yes	J
Centennial	2-Bedroom Apartments	401	Co-Ed, by Room	Private	Private	Yes	Yes	C
Carter (Honors LLC)	Traditional Style, Variety	130	Co-Ed, by Wing	Community, Suite, Private	Community	Yes	Yes	B
Stone (Pre-Health LLC)	Suite Style	82	Co-Ed, by Suite	Suite	Community	Yes	Yes	I
Dossett (Music LLC)	Traditional Style	113	Co-Ed, by Wing	Community	Community	Yes	Yes	K



### LUCILLE CLEMENT HALL

*Co-Ed, by Wing*

#### Features:

- 2 movable twin XL loft beds, desks, chairs, and built-in closet with drawers
- Bathrooms and showers located on each wing
- Kitchens located on the 1st, 3rd and 4th floors
- Laundry facilities located on the 1st floor
- Vending machines on every floor
- 2 elevators
- Multiple lobbies and lounges
- Number of windows: 1
- Window dimensions: 42" x 78"

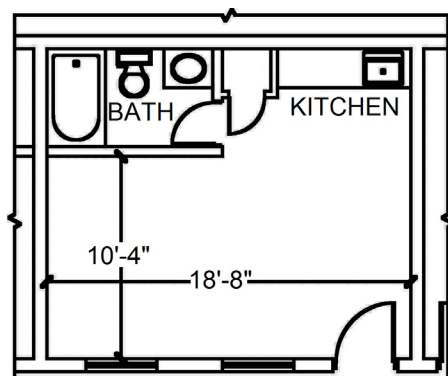
### SCAN FOR RATES



Prices are per person/per semester, and include all utilities, including laundry, water, & electricity. All types of housing are handicapped accessible, A.D.A. compliant.







## DAVIS EFFICIENCY APARTMENTS

*Co-Ed, by Room*

### Features:

2 movable wardrobes, twin XL loft beds, desks and chairs

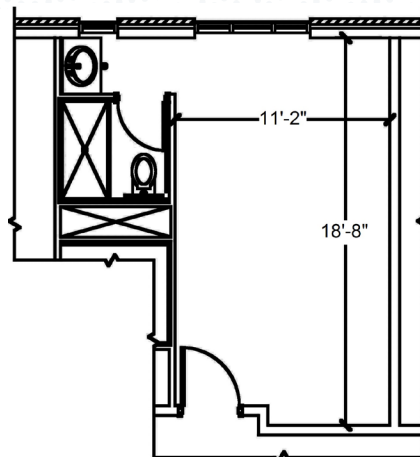
Bathroom and kitchenette located in each apartment

Laundry facilities located on the 2nd floor between B and C buildings, and on the 1st floor in B building

Exterior hallways leading to apartment entrance

Number of windows: 2

Window dimensions: 3'6" x 2'2"



## GOVERNORS HALL

*Co-Ed, by Room*

### Features:

2 movable twin XL loft beds, desks, chairs, wardrobes and dressers

Bathroom located in each room

Laundry facilities on 3rd and 4th floors

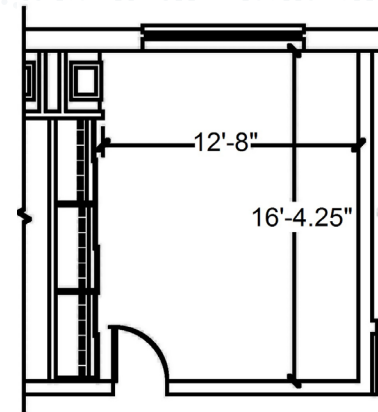
Vending machines on every floor

2 elevators

Multiple study/multipurpose rooms

Number of windows: 2 or 3

Window dimensions: First floor 8'x5' and 6' x 5' for all other floors



## POWELL HALL

*Co-Ed, by Wing*

### Features:

2 movable twin XL loft beds, desks, chairs, and built-in closet with drawers

Bathrooms and showers located on each floor

Kitchens located on each floor

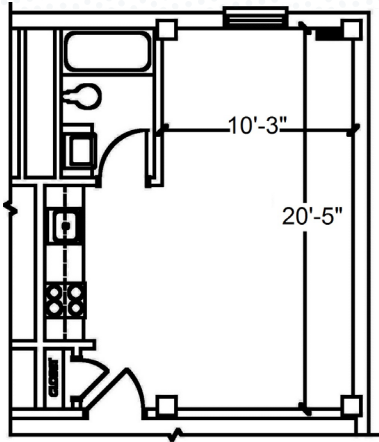
Laundry facilities located on the 2nd and 3rd floors

Vending machines on the 1st floor

Number of windows: 3

Window dimensions: Two 22" x 68" and one 36" x 68"





## LUNTSFORD EFFICIENCY APARTMENTS

*Female*

### Features:

2 movable twin XL beds, wardrobes, chairs and desks

Bathroom and kitchenette located in each apartment

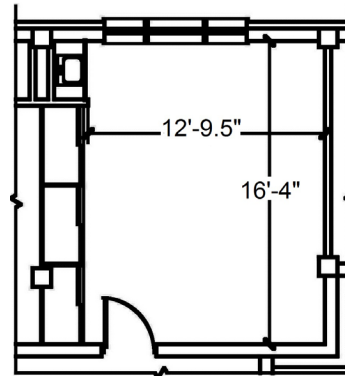
Laundry facilities located on the 3rd and 5th floors

Vending machines on the 2nd floor

Elevator

Number of windows: 1

Window dimensions: W 60" x L 40.5"



## WEST HALL

*Female*

### Features:

2 movable twin XL loft beds, desks, chairs, and built-in closet with drawers

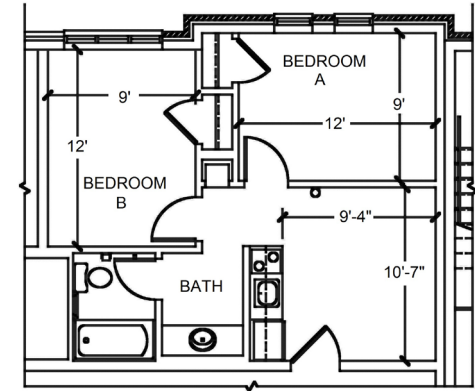
Bathrooms and kitchen on each floor

Laundry facilities located on the 2nd and 3rd floors

Vending machines on the 1st floor

Number of windows: 3

Window dimensions: Two 22" x 68" and one 43" x 68"



## CENTENNIAL HALL

*Co-Ed, by Room*

### Features:

2 single-occupancy bedrooms and limited single efficiency apartments

Movable desk, chair, and twin XL loft bed in bedroom

Shared living area with kitchenette, and bathroom

Laundry facilities located on 3rd and 4th floor

In-hall convenience store

2 elevators

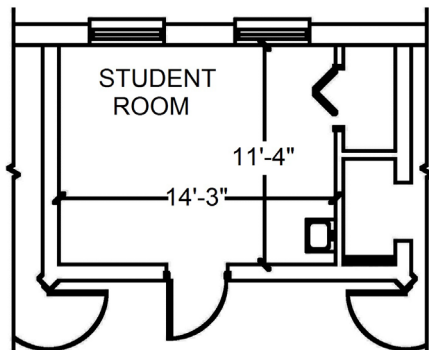
Multiple study/meeting rooms

Carpeted bedrooms

Number of windows: 3

Window dimensions: One is 6' x 5' and Two 2'4" x 5'





## CARTER HALL - HONORS LLC

*Co-Ed, by Wing*

### Features:

Double-occupancy rooms, private rooms, suites, and a limited number of efficiency apartments

Large lobby with grand piano

2 movable twin XL loft beds, chairs and desks

Laundry facilities located on the 2nd floor

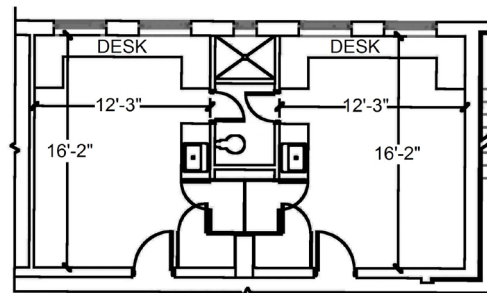
Room sizes and amenities vary

Kitchens located on 1st and 3rd floors

Carpeted floors

Number of Windows: Varies from 1-5

Window Dimensions: Three sizes of 28" x 80", 38" x 80" and 40.5" x 80"



## STONE HALL - PRE-HEALTH LLC

*Co-Ed, by Suite*

### Features:

Built-in desk, 2 movable twin loft beds, chairs and dressers

Elevator

Carpeted rooms

Suite-style bathrooms lock from the bathroom side for privacy, but for fire safety cannot be locked from the bedroom sides

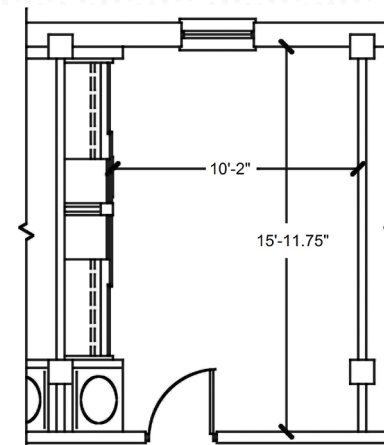
Kitchens located on each floor

Laundry facilities in basement

Vending machines in basement

Number of windows: 2

Window dimensions: 43.5" x 65"



## DOSSETT HALL - MUSIC LLC

*Co-Ed, by Wing*

### Features:

2 moveable twin XL loft beds, desks, chairs, and built-in closet with drawers

Bathrooms and showers located on each floor

Kitchen located on the 1st

Laundry facilities located on the 2nd floor

Vending machines in the basement

1 elevator

Large common lounge

Number of windows: 1

Window dimensions: 64.5" x 40.25"



# BUCCANEER RIDGE APARTMENTS



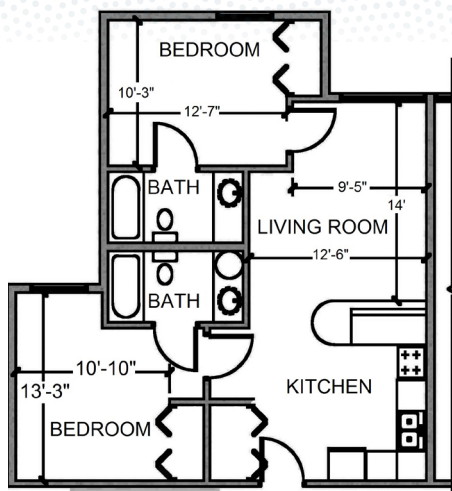
Buccaneer Ridge Apartments consist of five phases with each phase having its own unique qualities that will enhance your on-campus living experience.

In Phases 1-4, graduate students and upperclassmen (sophomores and above) may find the facilities and features of these apartment units the most convenient, affordable, and practical. Affordable academic year agreements and separate summer agreements are available.

**SCAN FOR RATES**



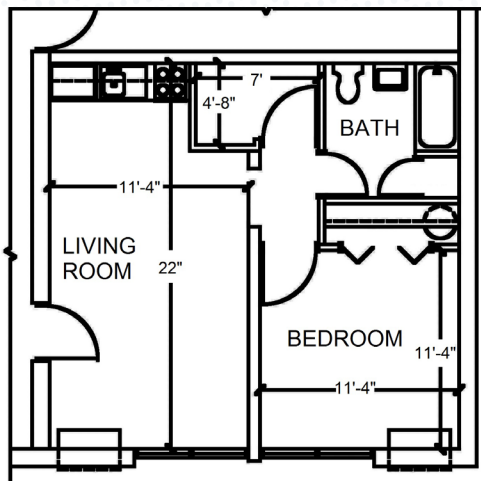
Prices are per person/per semester, and include all utilities, including laundry, water, & electricity. All types of housing are handicapped accessible, A.D.A. compliant.



## BUCCANEER RIDGE PHASES 1-4

### Features of the two-bedroom apartment are:

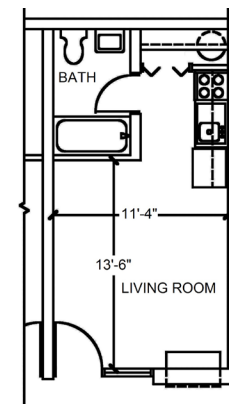
Full-sized bed	Carpeted bedrooms
Private bathroom	Couch
Desk and chair	Chair
Mirrored closets	Coffee table
Cable	Entertainment center
Wi-Fi	Microwave
Ethernet jack	Dishwasher
In-room alarm system	Washer and dryer



## BUCCANEER RIDGE PHASE 5

### Features of the one-bedroom apartments are:

Full-sized bed	Small dining table with two chairs
Four-drawer chest	Entertainment console
Desk with chair	Cable
Sofa	Wi-Fi
Side chair	Ethernet jack
Ottoman	
End table	



## BUCCANEER RIDGE PHASE 5

### Features of the efficiency apartments are:

Full-sized bed	Cable
Four-drawer chest	Wi-Fi
Desk with two chairs	Ethernet jack
Small table	



# IT MATTERS THAT YOU START TODAY!

## APPLICATION AND ASSIGNMENT PROCESS

Apply early – housing is not promised or guaranteed, but available on a first-come, first-served basis.

Application and \$100 deposit can be made online at [etsu.edu/housing](https://etsu.edu/housing).

You may request your own roommate or fill out a questionnaire that our assignment system will use to show you a list of compatible roommates.

If you opt out of the full questionnaire, housing staff will use information such as smoking preference, classification, and room/hall availability to match roommates.

Requests to change room, hall, or roommate assignment can be made by sending an email from your ETSU email account with your name, E-number and roommate and/or hall request to [assignments@etsu.edu](mailto:assignments@etsu.edu). These requests will be placed on a reassignment list. You will be notified when, or if, you are reassigned.

If requesting a new roommate, both students must request the change.







## CONTACT US TODAY!

Office hours are Monday-Friday, 8 a.m. – 4:30 p.m.

Contact us via the information below.

**Phone:** (423) 439-4446

**Email:** [housing@etsu.edu](mailto:housing@etsu.edu)

**Web:** [etsu.edu/housing](http://etsu.edu/housing)

**Location:** D.P. Culp Student Center,  
Carrier Center, Suite 226

**Mailing Address:** P. O. Box 70723-ETSU  
Johnson City, TN 37614

**GPS Address:** 412 JL Seehorn Road  
Johnson City, TN 37614

For additional FAQs and policies, please go to our  
website at [etsu.edu/housing](http://etsu.edu/housing)





## TOURS

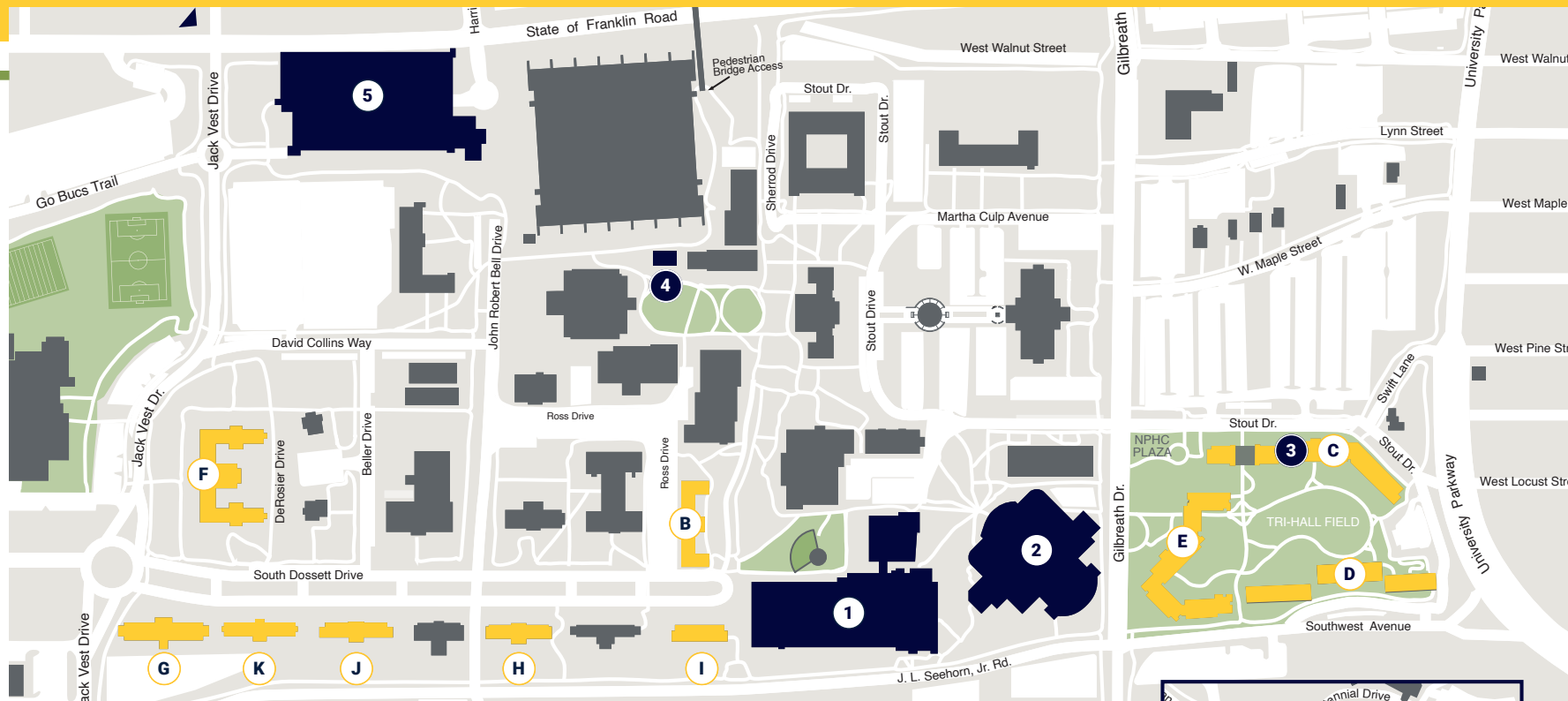
You may view our halls online, including floor plans, photos, videos, and more!

For more information, please visit our website at [etsu.edu/housing](https://etsu.edu/housing).

## CAMPUS MAP

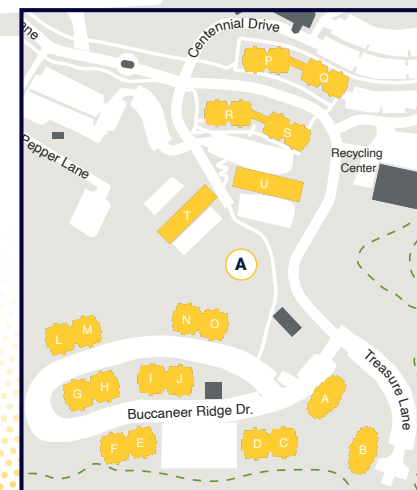
- A. Buccaneer Ridge
- B. Carter Hall
- C. Centennial Hall
- D. Davis Efficiency Apartments
- E. Governors Hall
- F. Lucille Clement Hall
- G. Luntsford Efficiency Apartments
- H. Powell Hall
- I. Stone Hall
- J. West Hall
- K. Dossett Hall





## DINING OPTIONS

- |   |   |   |
|---|---|---|
| <p><b>1. D.P. CULP STUDENT CENTER</b><br/>           Dining Hall<br/>           Starbucks<br/>           Roger's Buc Mart Deli<br/>           Chick-fil-A<br/>           Mein Bowl<br/>           Taco Bell</p> | <p><b>2. SHERROD LIBRARY</b><br/>           Dunkin'</p> <p><b>3. CENTENNIAL HALL</b><br/>           Buc Stop<br/>           Convenience Store</p> | <p><b>4. THE TREE HOUSE</b><br/>           Tree House Snack Bar</p> <p><b>5. PARKING GARAGE</b><br/>           Pod Market<br/>           Subway</p> |
|---|---|---|





## EAST TENNESSEE STATE UNIVERSITY

etsu.edu

(423) 439-4213 | 1 (800) GO2-ETSU  
1276 Gilbreath Drive, Johnson City, TN 37614



East Tennessee State University does not discriminate against students, employees, or applicants for admission or employment on the basis of race, color, religion, creed, national origin, sex, sexual orientation, gender identity/expression, disability, age, status as a protected veteran, genetic information, or any other legally protected class with respect to all employment, programs and activities sponsored by ETSU. The following person has been designated to handle inquiries regarding non-discrimination policies: Compliance Coordinator, PO Box 70271, Johnson City, TN 37614, (423) 439-8544. ETSU's policy on non-discrimination can be found at: [etsu.edu/universitycounsel/compliance](https://etsu.edu/universitycounsel/compliance). ETSU is an AA/EEO employer. ETSU-230157-A-23 Designed and produced by BMC Creative.

